



# Grants Awarded

• 2019 Recipients •

## OREF CAREER DEVELOPMENT GRANT

PI: Paul E. Matuszewski, MD  
Co-PI: Brian Noehren, PhD  
University of Kentucky  
*Predictors of Persistent Pain and Performance in Patients with Fractures*

## OREF PROSPECTIVE CLINICAL RESEARCH AWARD

PI: Thomas Kremen, MD  
University of California, Los Angeles  
*Biologic Therapy to Prevent Osteoarthritis After ACL Injury*

## OREF CLINICAL RESEARCH AWARD

L. Andrew Koman, MD  
Wake Forest University School of Medicine  
*Musculoskeletal Uses of Botulinum Toxins: A 30-Year Translational Journey at Wake Forest School of Medicine*

## RESEARCH GRANTS

### OREF/ASES/ROCKWOOD CLINICAL RESEARCH GRANT IN SHOULDER CARE

PI: John G. Horneff III, MD  
Co-PI: Joseph A. Abboud, MD  
The Rothman Institute  
*Photodynamic Therapy for C. Acnes Decolonization of the Shoulder Dermis*

Funding made possible by the Dr. and Mrs. Charles Rockwood Family Endowment Fund

### OREF TREATMENT OF KNEE OSTEOARTHRITIS RESEARCH GRANT IN HONOR OF THE KNEE SOCIETY

PI: Nicolas Piuizzi, MD  
Cleveland Clinic Foundation  
*Personalized Outcome Prediction Tool for Total Knee Arthroplasty*

Funding made possible by Peter Walker, PhD

### OREF PREVENTION OF MUSCULOSKELETAL YOUTH SPORTS INJURIES RESEARCH GRANT IN HONOR OF JAMES ANDREWS, MD

PI: Jason Zaremski, MD  
University of Florida, Gainesville  
*Development of a Protocol to Evaluate Baseball Pitcher's Workload*

### OREF/STRYKER ROBOTIC-ASSISTED TOTAL HIP REPLACEMENT CLINICAL RESEARCH GRANT

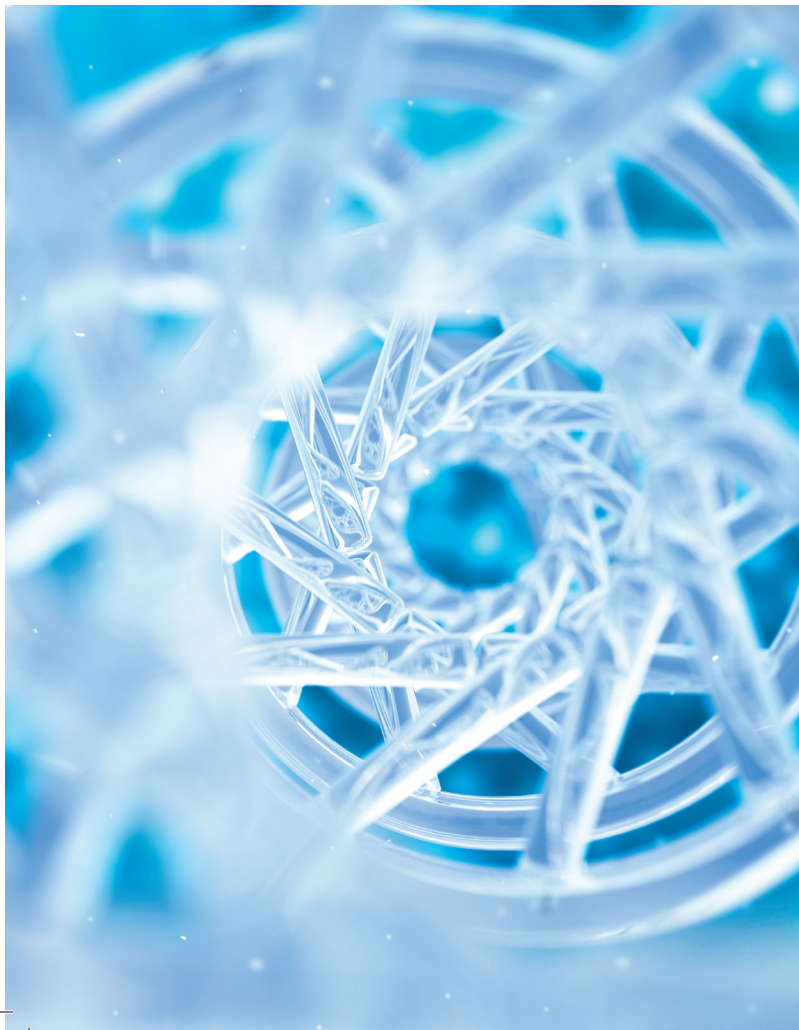
PI: Ran Schwarzkopf, MD  
NYU Langone Medical Center  
*Targeting the Functional Safe-Zone with Robotic-Assisted THA*

Funding made possible by Stryker Orthopaedics

### OREF TOTAL ANKLE REPLACEMENT RESEARCH GRANT

PI: Constantine Demetracopoulos, MD  
Co-PI: Timothy M. Wright, MD  
The Hospital for Special Surgery  
*Mechanics of the Ankle and Adjacent Joints after Total Ankle Replacement*

Funding made possible by Wright Medical Technology, Inc.



## **OREF IMPACT OF REGULATORY POLICIES ON PATIENT-PHYSICIAN RELATIONSHIP RESEARCH GRANT IN HONOR OF SIGVARD HANSEN, MD**

PI: Todd Kelley, MD

University of Cincinnati, Adult Reconstruction Division

*Assessing Effects of EMR on Physician Well-Being Using Smartphone Sensing*

Funding made possible in part by DePuy Synthes Companies of Johnson & Johnson

## **OREF/MTF RESEARCH GRANT**

PI: Chathuraka Jayasuriya, PhD

Co-PI: Brett Owens, MD

Rhode Island Hospital

*Implementing Allogeneic Stem Cells from Cartilage Graft in Meniscus Repair*

Funded by Musculoskeletal Transplant Foundation Biologics

## **OREF/GOLDBERG ARTHRITIS RESEARCH GRANT**

PI: Brian Klatt, MD

University of Pittsburgh

*Bilateral Knee Kinematics in High and Low-Functioning Patients After TKA*

Funding made possible by the Dr. Victor and Mrs. Harriet Goldberg Endowment Fund

## **ABOS/OREF SIMULATION RESEARCH GRANT**

PI: James F. Kellam, MD

Co-PI: Catherine G. Ambrose, PhD

The University of Texas Health Science Center at Houston

*Fracture Fixation Training Using a Hybrid Simulator with Data Visualization*

Funded by the American Board of Orthopaedic Surgery

## **OREF HIP AND KNEE RESEARCH GRANT**

*In collaboration with the American Association of Hip and Knee Surgeons, The Hip Society and The Knee Society*

PI: Young-Min Kwon, MD, PhD

Co-PI: Marco Laggio, PhD

Massachusetts General Hospital

*The Role of Brain Glial Activation in Persistent Pain Following TKA*

Funding made possible by Zimmer Biomet

## **OREF/GLADDEN ORTHOPAEDIC HEALTH DISPARITIES RESEARCH GRANT**

PI: Muyibat Adelani, MD

Washington University School of Medicine, St. Louis

*Connecting Community Context to Racial Disparities in Joint Replacement*

Funding made possible by the J. Robert Gladden Orthopaedic Society

## **OREF/OTA TRAUMA GRANT**

PI: Prism Schneider, MD, PhD

The University of Calgary

*Hypercoagulability After Hip Fracture as Determined by Thrombelastography*

With funding provided by the Orthopaedic Trauma Association, DePuy Synthes and Zimmer Biomet

## **THE TOTAL JOINT REPLACEMENT RESEARCH GRANT IN HONOR OF JORGE O. GALANTE, MD**

PI: Thorsten M. Seyler, MD

Duke University Medical Center

*Perioperative Antibiotic Prophylaxis in Patients Undergoing Elective TJA*

## **THE TREATMENT OF KNEE OSTEOARTHRITIS RESEARCH GRANT**

PI: Lutul D. Farrow, MD

Co-PI: John Elias, PhD

Cleveland Clinic Foundation

*Characterizing Cartilage Degradation Caused by Patellar Instability*

## **OREF SOFT TISSUE REPAIR AND REGENERATION SPORTS MEDICINE GRANT IN HONOR OF RUSSELL F. WARREN, MD**

*In collaboration with the American Orthopaedic Society for Sports Medicine (AOSSM)*

PI: Natalie L. Leong, MD

Co-PI: Jia Jang, PhD

University of Maryland at Baltimore

*Therapeutic Application of Perivascular Stem Cells to Rotator Cuff Repair*

## **OREF PEDIATRIC RESEARCH GRANT**

PI: Todd Milbrandt, MD

Co-PI: A. Noelle Larson, MD

Mayo Clinic - Rochester

*Prospective Study of Vertebral Tethering vs. Fusion for Scoliosis*

## **OREF/AIRCAST FOUNDATION ORTHOPAEDIC RESEARCH GRANT**

PI: John W. Xerogeanes, MD

Emory University

*Are Opioids Needed?*

## **OREF NEW INVESTIGATOR GRANT**

PI: Alexander Aleem, MD

Co-PI: Muhammad Farooq Rai, PhD

Washington University School of Medicine in St. Louis

*Understanding the Molecular Biology of Shoulder Joint Degeneration*





## CLINICIAN-SCIENTIST GRANTS

### OREF MENTORED CLINICIAN-SCIENTIST GRANT

PI: David Kovacevic, MD  
Columbia University Medical Center  
*Inflammation of Rotator Cuff Tear and Repair*

### FRIEDENBERG CLINICIAN-SCIENTIST GRANT

PI: Robin Kamal, MD  
Stanford University  
*Developing and Testing a Tool for Preference Elicitation in Carpal Tunnel*

Funded by the Zachary B. and Mrs. Kathleen Friedenbergs Endowment Fund

### RESIDENT CLINICIAN SCIENTIST TRAINING GRANTS

PI: Kelsey Bonilla, MD  
University of Pennsylvania  
*Achilles Tendon Response to Varying Degrees of Exercise Intensity*

Funding made possible by the Ira A. Roschelle Family Foundation

PI: Jarred Bressner, MD  
Co-PI: Adam Levin, MD  
Johns Hopkins University  
*Topology Optimization of Hip Implants to Reduce Stress Shielding*

Funding made possible by the Ira A. Roschelle Family Foundation

PI: Daniel Buchalter, MD  
Co-PI: Philipp Leucht, MD, PhD  
Co-PI: Sanjit R. Konda, MD  
New York University School of Medicine  
*GIK in Preventing Musculoskeletal Injury After Trauma*

Funding made possible by Thomas P. Sculco, MD

PI: Connor Delman, MD  
Co-PI: Maury L. Hull, PhD  
The Regents University of California, Davis  
*Analysis of Tibial Contact in Kinematically Aligned TKA in Three Implants*

Recipients of an MTF/Charles H. Herndon  
Resident Clinician Scientist Training Grant

Funding made possible by Musculoskeletal Transplant Foundation Biologics

PI: Ryan C. Rauck, MD  
Co-PI: Lawrence B. Gulotta, MD  
Co-PI: Samuel Taylor, MD  
The Hospital for Special Surgery  
*The Role of the Long Head of the Biceps Tendon in Shoulder Stabilization*

Recipients of an MTF/Charles H. Herndon  
Resident Clinician Scientist Training Grant

Funding made possible by Musculoskeletal Transplant Foundation Biologics

PI: Andrew Zogby, MD  
Co-PI: Samuel Ward, MD  
University of California, San Diego  
*A Novel Treatment Strategy for Chronic Rotator Cuff Tears*

In Memory of John T. Hocker, MD

Funding made possible by the John T. Hocker Charitable Foundation

## RESIDENT RESEARCH PROJECT GRANTS

### OREF RESIDENT RESEARCH PROJECT GRANTS

PI: Daniel Bohl, MD  
Co-PI: Kamran Hamid, MD  
Rush University Medical Center  
*RCT of Dilute Betadine Soak and Scrub for Foot and Ankle Surgery*

PI: Kathleen Keely Boyle, MD  
Co-PI: Thomas Duquin, MD  
The Research Foundation for The SUNY on behalf of University at Buffalo  
*Blue Light Reduces Cutibacterium (Propionibacterium) Acnes Bacterial Burden*

Funding made possible by Brown University in Memory of Dr. Michael Ehrlich

PI: Peter Chang, MD  
Co-PI: David Brogan, MD  
Washington University in St. Louis  
*In Vivo Analysis of 3D Printed Peripheral Nerve Conduits*

PI: Danielle Chun, MD  
Co-PI: Erin Hsu, MD  
Northwestern University  
*A Multimodal Nanofiber Scaffold to Improve Bone Healing in Smokers*

PI: Guang-Ting Cong, MD  
Co-PI: Matthew Cunningham, MD, PhD  
The Hospital for Special Surgery  
*Nutritional Sustenance and Waste Scavenging in Bone Grafting*

Funding made possible by R. Michael Meneghini, MD

PI: Ryan Cox, MD  
Co-PI: Daniel Davis, MD  
Thomas Jefferson University, Rothman Institute  
*Hypertonic Saline and Postoperative Pain After Rotator Cuff Repair*

Funding made possible by Dr. Adam and Julie Harris  
in memory of Eugene Harris, MD

PI: Dana Cruz, MD  
Co-PI: Eric Gokcen, MD  
Temple University of the Commonwealth System of Higher Education  
*A Simple Test to Determine Ability to Drive After RLE Surgery*

Funding provided in part by Conformis, Inc.

PI: Michael Davies, MD  
CO-PI: Brian Feeley, MD  
University of California, San Francisco  
*Characterizing Human FAPs to Decrease Fatty Infiltration of Rotator Cuff*

In honor of Jack C. Hughston, MD and James R. Andrews, MD

Funding made possible by Michael J. Axe, MD and Jeremie M. Axe, MD

PI: Clayton Del Prince, MD  
Co-PI: Melissa Kluczynski, MS, BS  
Co-PI: Leslie Bisson, MD  
The Research Foundation for The SUNY on behalf of University at Buffalo  
*Impact of Standardized Opiate Prescribing on Number of Pills Prescribed*

PI: Gregory F. Elia, MD  
Co-PI: Arnold-Peter Weiss, MD  
Rhode Island Hospital  
*Initial Metacarpal Stability Following Thumb Carpometacarpal Arthroplasty*

PI: Neill Li, MD  
Co-PI: Chathuraka Jayasuriya, PhD  
Rhode Island Hospital  
*Promoting Cartilage Regeneration Through DLX5 Modification of CPCs*

PI: Michelle Mo, MD  
Co-PI: Scott Luhmann, MD  
Washington University in St. Louis School of Medicine  
*The Use of Biomarkers in Pediatric Musculoskeletal Infections*

PI: Jeffrey Olson, MD  
Co-PI: Edward Rodriguez, MD  
Beth Israel Deaconess Medical Center-Orthopaedics  
*Biomechanical Testing of Proximal Humerus Fixation: A Novel Approach*

Funding in honor of Bernard R. Bach Jr., MD

PI: Andrew Schneider, MD  
Co-PI: John Callaci, PhD  
Loyola University Chicago, Health Sciences Division  
*Biomechanical and Histologic Effects of Ethanol on Rat Rotator Cuff Repair*

Funding in honor of Bernard R. Bach Jr., MD

PI: Michael Stevens, MD  
Co-PI: Brandon Collofello, MD  
Co-PI: Vince Prusick, MD  
University of Kentucky Research Foundation  
*The Role of Blade Wear and Cure Time in the Prevention of Cast Saw Injuries*

### OREF/AIRCAST FOUNDATION RESIDENT RESEARCH PROJECT GRANTS

PI: Matthew Christie, MD  
Co-PI: Elie Ghanem, MD  
The University of Alabama at Birmingham  
*Biofilm Growth on Cerclage Materials: Are Nonmetallic Polymers Superior?*

PI: Christina Hajewski, MD  
Co-PI: John E. Femino, MD  
University of Iowa  
*The Utility of Deltoid Ligament Reconstruction in Syndesmotic Injuries*

PI: Ian Hutchinson, MD  
Co-PI: Joseph Zimmerman, MD  
Albany Medical College  
*Preoperative Phototherapy with Benzyl Peroxide to Decrease P Acnes Burden*

PI: Alexander E. Loeb, MD  
Co-PI: Paul Khanuja, MD  
Johns Hopkins University  
*Enhanced Recovery After Surgery Program for Geriatric Fragility Fractures*

PI: Ayoosh Pareek, MD  
Co-PI: Christopher Camp, MD  
Mayo Clinic  
*Baseball Statistics for Assessing Return to Play in Pitchers*

PI: Heather Roberts, MD  
*The Regents of the University of California, San Francisco*  
*Epidemiology, Outcomes and Cost of Revision Total Hip and Knee Arthroplasty*

## **OREF/EXACTECH RESIDENT RESEARCH PROJECT GRANTS**

PI: Keith Aziz, MD  
Co-PI: Aviram Giladi, MD  
Co-PI: Kenneth Means, MD  
MedStar Health Research Institute  
*The Effect of Skin Pigmentation on Evaluation of Distal Limb Ischemia*

PI: Matthew Counihan, MD  
The Trustees of the University of Pennsylvania  
*Limited Scar Resection for Chronic Achilles Repair: Use of a Rat Model*

PI: Lynn Ann Forrester, MD  
Co-PI: Stavros Thomopoulos, PhD  
Columbia University Medical Center  
*Early Osteoarthritis After Neonatal Brachial Plexus Palsy*

PI: Christopher Kowalski, MD  
Co-PI: Hyun-Min Kim, MD  
Pennsylvania State University College of Medicine  
*Shoulder Immobilization Following Reverse Total Shoulder Arthroplasty*

PI: Peter Shaughnessy, MD  
Co-PI: John-Erik Bell, MD  
Dartmouth-Hitchcock Clinic  
*Off Axis Loading and Articulation in the Loosening of Cemented Glenoids*

## **OREF/JRGOS ORTHOPAEDIC DISPARITIES RESIDENT RESEARCH PROJECT GRANTS**

PI: Blake Montgomery, MD  
Co-PI: Kali Rose Tileston, MD  
Stanford University  
*Healthcare Disparities in Pediatric Fracture Care*

Funding made possible by the J. Robert Gladden Orthopaedic Society

PI: Asa West Shanekel, MD  
Co-PI: C. Lowry Barnes, MD  
University of Arkansas for Medical Sciences  
*Addressing Disparities in Total Knee Arthroplasty Through Patient Education*

Funding made possible by the J. Robert Gladden Orthopaedic Society

## **OREF/WOF RESIDENT RESEARCH PROJECT GRANTS**

PI: David Falgout, MD  
Arizona Board of Regents, University of Arizona  
*Recovery from Ciprofloxacin Induced Tendinopathy*

PI: Peter Hsiue, MD  
Co-PI: Nicholas Bernthal, MD  
Co-PI: Michael Yeaman, PhD  
The Regents of the University of California, Los Angeles  
*Macrophage Priming and Adoptive Transfers in Orthopaedic Implant Infections*

PI: Chad Ishmael, MD  
Co-PI: Nicholas Bernthal, MD  
The Regents of the University of California, Los Angeles  
*The Promise of Photodynamic Therapy (PDT) for Implant Infection*

## **OREF/CURRENT CONCEPTS IN JOINT REPLACEMENT CLINICAL PRACTICE AWARDS**

### **Spring Award**

Christopher Dy, MD  
Washington University in St. Louis  
*Two State Comparison of Total Joint Arthroplasty After Medicaid Expansion*

Funding made possible by A. Seth Greenwald, D.Phil(Oxon)

### **Winter Award**

Cindy Nahhas, BS  
Rush University Medical Center  
*Randomized Trial of Static and Articulating Spacers for The Infected TKA*

Funding made possible by A. Seth Greenwald, D.Phil(Oxon)

## ORS/OREF DISTINGUISHED INVESTIGATOR AWARD

Alan Grodzinsky, PhD  
*Massachusetts Institute of Technology (MIT) Biological Engineering*

## OREF/INTERNATIONAL SOCIETY OF ORTHOPAEDIC SURGERY AND TRAUMATOLOGY TRAVEL AWARDS

HossamElden Abodonia, MD  
Kafr Eldawar General Hospital  
*Scaphocapitate Fusion for Kienbock's Disease*

Lin Cong, MD  
The First Affiliated Hospital, China Medical University  
*Minimally Invasive Treatment of Adolescent Idiopathic Scoliosis*

## REGIONAL NEW INVESTIGATOR AWARDS

### EASTERN ORTHOPAEDIC ASSOCIATION

Alex Gu, BS  
George Washington School of Medicine and Health Sciences  
*Operative Time Greater than 120 minutes is Associated with Increased Pulmonary and Thromboembolic Complications Following Revision Total Hip Arthroplasty*

Ludovico Lucenti, MD  
Rothman Orthopedics  
*A Comparison of Screw Placement Utilizing an Antegrade vs a Retrograde Technique for Fixation of Scaphoid Waist Fractures*

Mohamed Salar, MD  
University of Florida Health Jacksonville  
*Infections Associated with Temporary External Fixation*

### SOUTHERN ORTHOPAEDIC ASSOCIATION

Keith Aziz, MD  
Johns Hopkins Orthopedics  
*Missing Data: How it Affects the Identification of Risk Factors for Shoulder Surgery Complications*

Jonathan B. Goodloe, MD  
Medical University of South Carolina  
*Variability in Opioid Administration After Fixation of Supracondylar Humerus Fractures*

Sophia A. Traven, MD  
Medical University of South Carolina  
*Elevated BMI Predicts Concurrent Surgical Pathology at the Time of Pediatric ACL*

### WESTERN ORTHOPAEDIC ASSOCIATION

Ryland Kagan, MD  
Oregon Health & Science University  
*Mean 10-year Survivorship, Patient-Reported Outcomes and Satisfaction of a Fixed-Bearing Unicompartmental Knee Arthroplasty*

Carol Lin, MD, MA  
Cedars-Sinai Medical Center  
*Implementing a Geriatric Fracture Program in a Pluralistic Environment*

Zachary C. Lum, DO  
University of California, Davis Medical Center  
*Females and Long Spinal Fusions Result in Total Hip Arthroplasty*





The Orthopaedic Research and Education Foundation, founded in 1955, is an independent, charitable 501(c)(3) organization committed to improving lives by supporting excellence in orthopaedic research. OREF is dedicated to being the leader in supporting research that improves function, eliminates pain and restores mobility, and is the premier orthopaedic organization funding research across all specialties.

Since its founding, OREF has provided nearly \$150 million in orthopaedic research grants and awards. Current funding opportunities and a list of awarded grants may be accessed at [www.oref.org/grants](http://www.oref.org/grants).



ORTHOPAEDIC RESEARCH  
AND EDUCATION FOUNDATION®

9400 West Higgins Road | Suite 215  
Rosemont IL 60018-4975  
P (847) 698-9980 | F (847) 698-7806  
[www.oref.org](http://www.oref.org)



@OREFtoday